



Est. 2003

# Western Engineering Consultants, Inc.

## PROJECT EXPERIENCE

2005-2006

0044.001.00

### Highlights

Planning and Engineering  
PUD & Use By Right  
Approvals 2005  
Construction 2006

First German Kraut Burger  
Restaurant in Brighton

### Project Cost

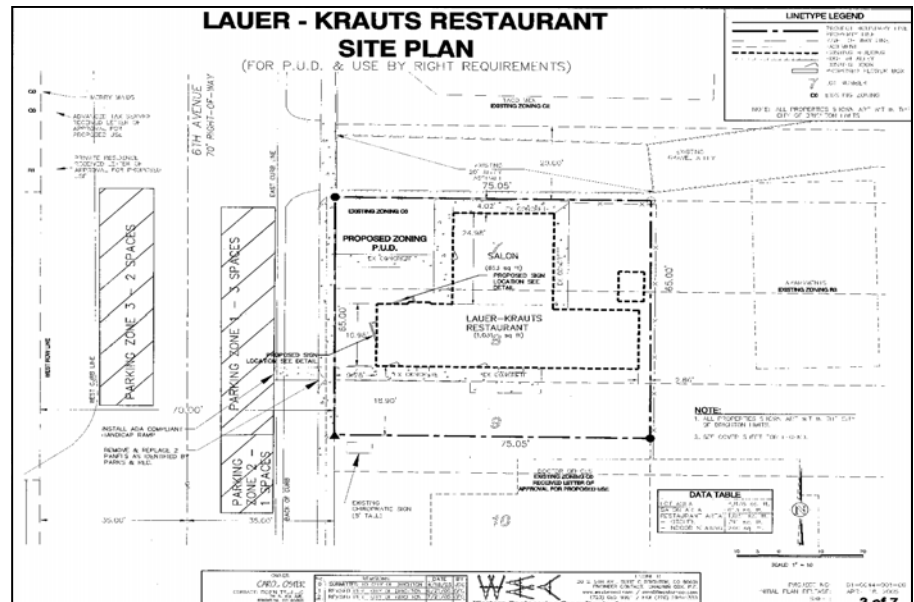
\$8,000 Consulting  
\$20,000 Construction

### Client

Lauer Krauts, LLC  
26 South 6th Avenue

# Lauer - Krauts Restaurant

Brighton, Colorado



Before



After

### Project Description

Lauer Krauts retained Western Engineering Consultants, Inc. (WECI) to provide planning and civil engineering for their proposed infill redevelopment in Brighton. As most infill projects within the City have unique issues trying to meet current City code on pre-municipal code lot sizes. This project required a change in use from an existing apartment located in the southern portion of the existing building—into a proposed restaurant. A PUD was necessary to achieve a multi use building since the northern half of the building had been a prominent Hair Salon for the past 20 years. An outdoor seating area, landscaping, signage, and offsite parking issues were all part of the unique project.



Civil Engineering · Land Planning · Landscape Architecture

20 South 5th Avenue, Brighton, CO 80601 · www.westerneci.com · Phone 720 685-9951