



Est. 2003

Western Engineering Consultants, Inc.

PROJECT EXPERIENCE

2005

0019.001.00

Rebecca's Landing Subdivision

Boulder, Colorado

Highlights

Planning, landscape, and engineering services

Single lot subdivision into 3 lots

Project Cost

\$800,000 Construction and Consultants fees

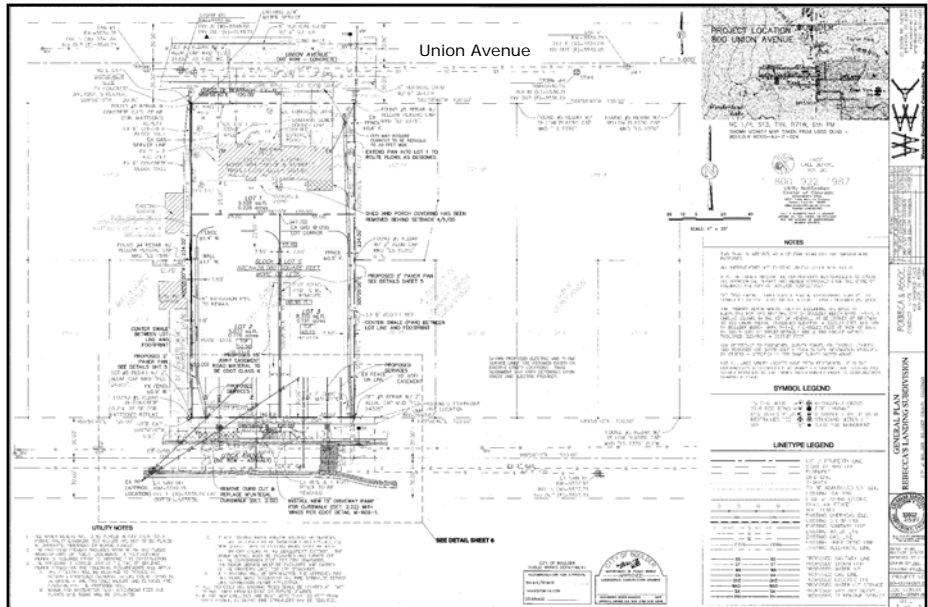
Client

Sinoway

Project Description

800 Union is located in the northern part of Boulder in a low density area of single family development. As shown by the photos, the views from this property are outstanding. This project encompassed the subdivision of a single lot into three lots.

Western Engineering Consultants (WECI) was hired for its expertise in residential land development. This parcel of land was originally a 0.6 acre single family dwelling that was subdivided into 3 lots. WECI took this property through preliminary planning processes, annexation and rezoning, preliminary and final platting and engineering applications for the project. In addition, WECI also provided landscape plans for this low density development.



735 Utica Avenue



Rear of 800 Union - Before Replat



743 Utica Avenue



Civil Engineering · Land Planning · Landscape Architecture

20 South 5th Avenue, Brighton, CO 80601 · www.westerneci.com · Phone 720 685-9951